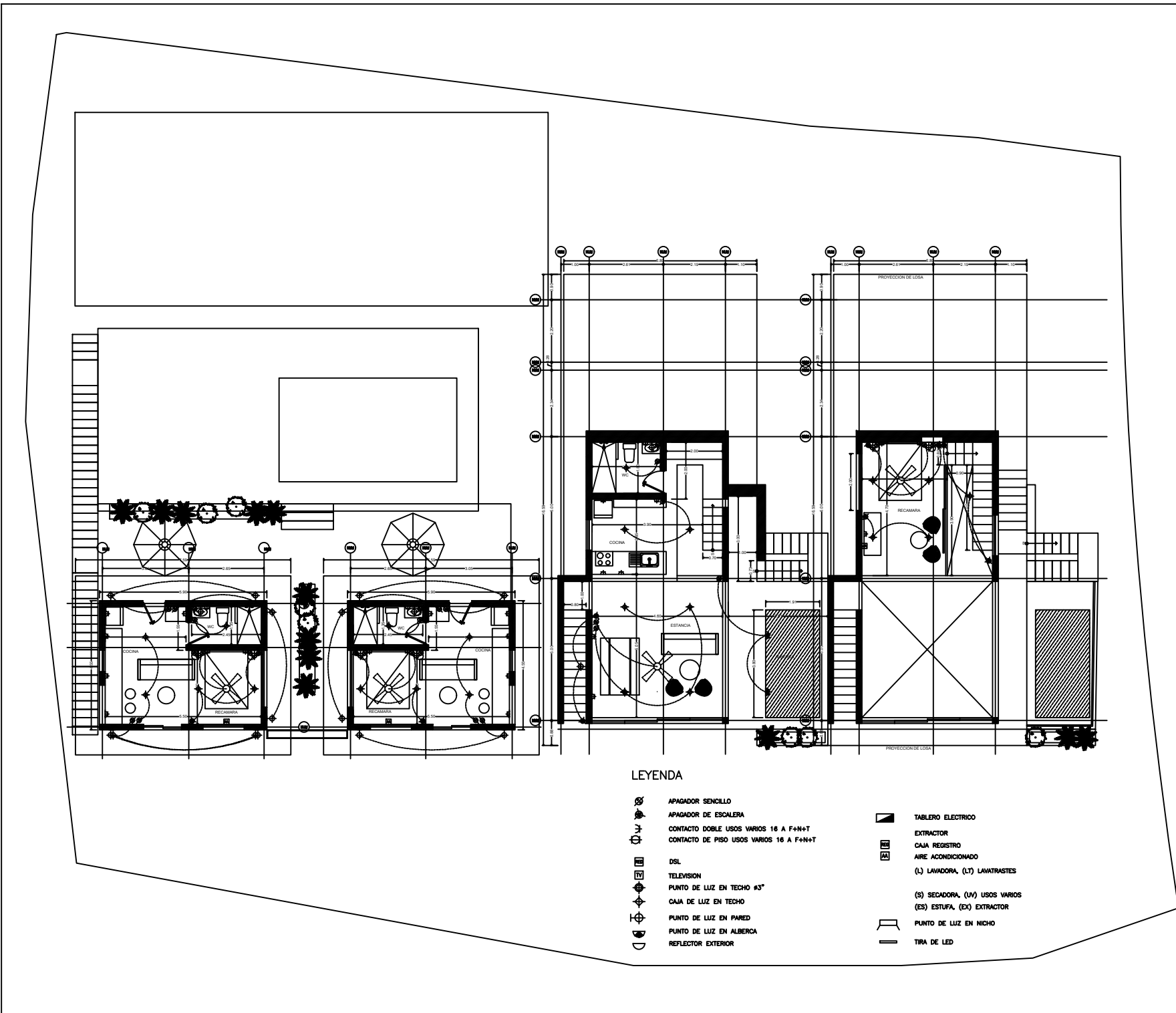







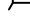




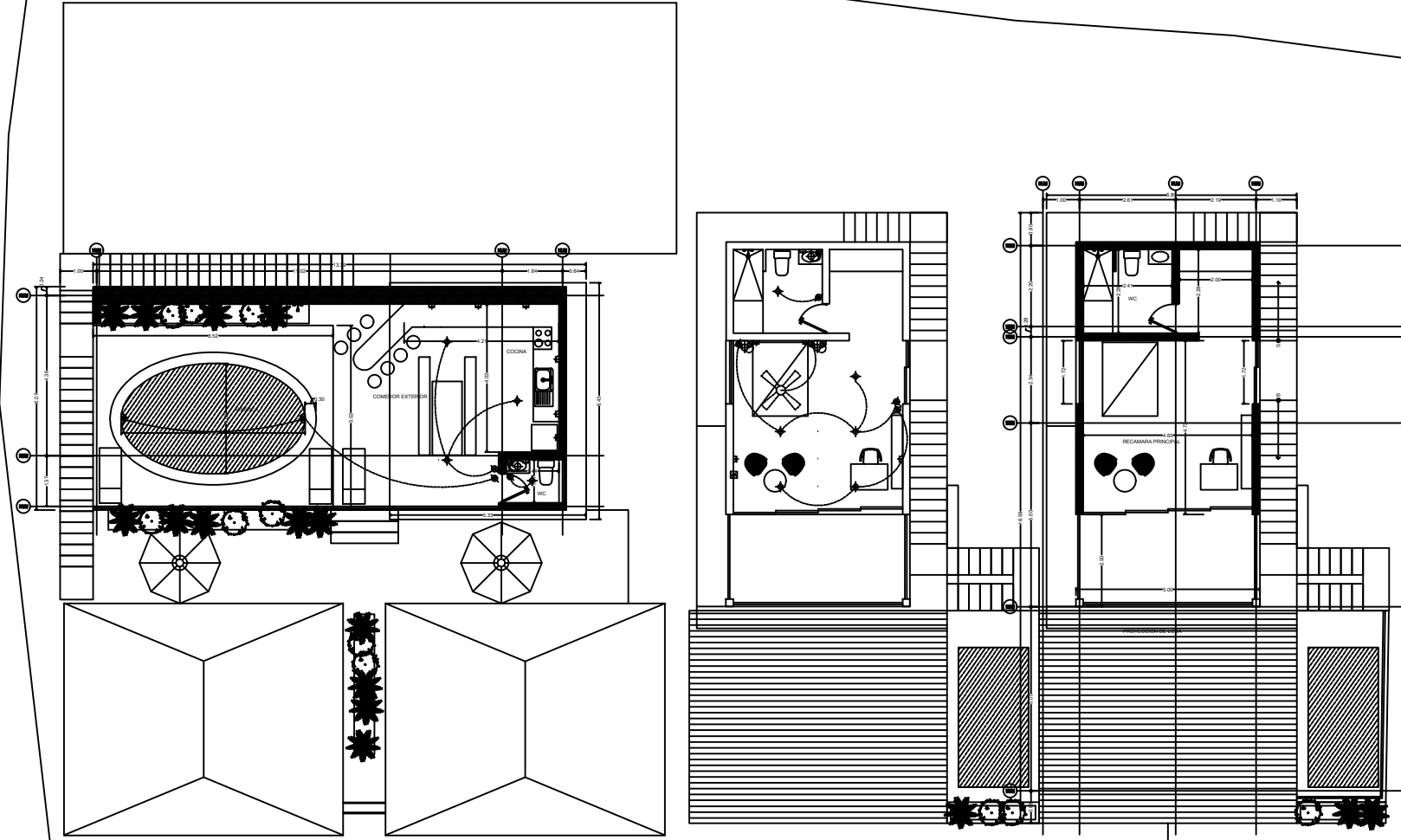
LEYENDA

- | | | | |
|--|---|--|----------------------------------|
| | APAGADOR SENCILLO | | TABLERO ELECTRICO |
| | APAGADOR DE ESCALERA | | EXTRACTOR |
| | CONTACTO DOBLE USOS VARIOS 16 A F+N+T | | CAJA REGISTRO |
| | CONTACTO DE PISO USOS VARIOS 16 A F+N+T | | AIRE ACCIONADO |
| | DSL | | (L) LAVADORA, (LT) LAVATRASTES |
| | TELEVISION | | (R) REFRIGERADOR, (M) MICROONDAS |
| | PUNTO DE LUZ EN TECHO #3" | | (S) SECADORA, (UV) USOS VARIOS |
| | CAJA DE LUZ EN TECHO | | (ES) ESTUFA, (EX) EXTRACTOR |
| | PUNTO DE LUZ EN PARED | | PUNTO DE LUZ EN NICHO |
| | PUNTO DE LUZ EN ALBERCA | | TIRA DE LED |
| | REFLECTOR EXTERIOR | | |



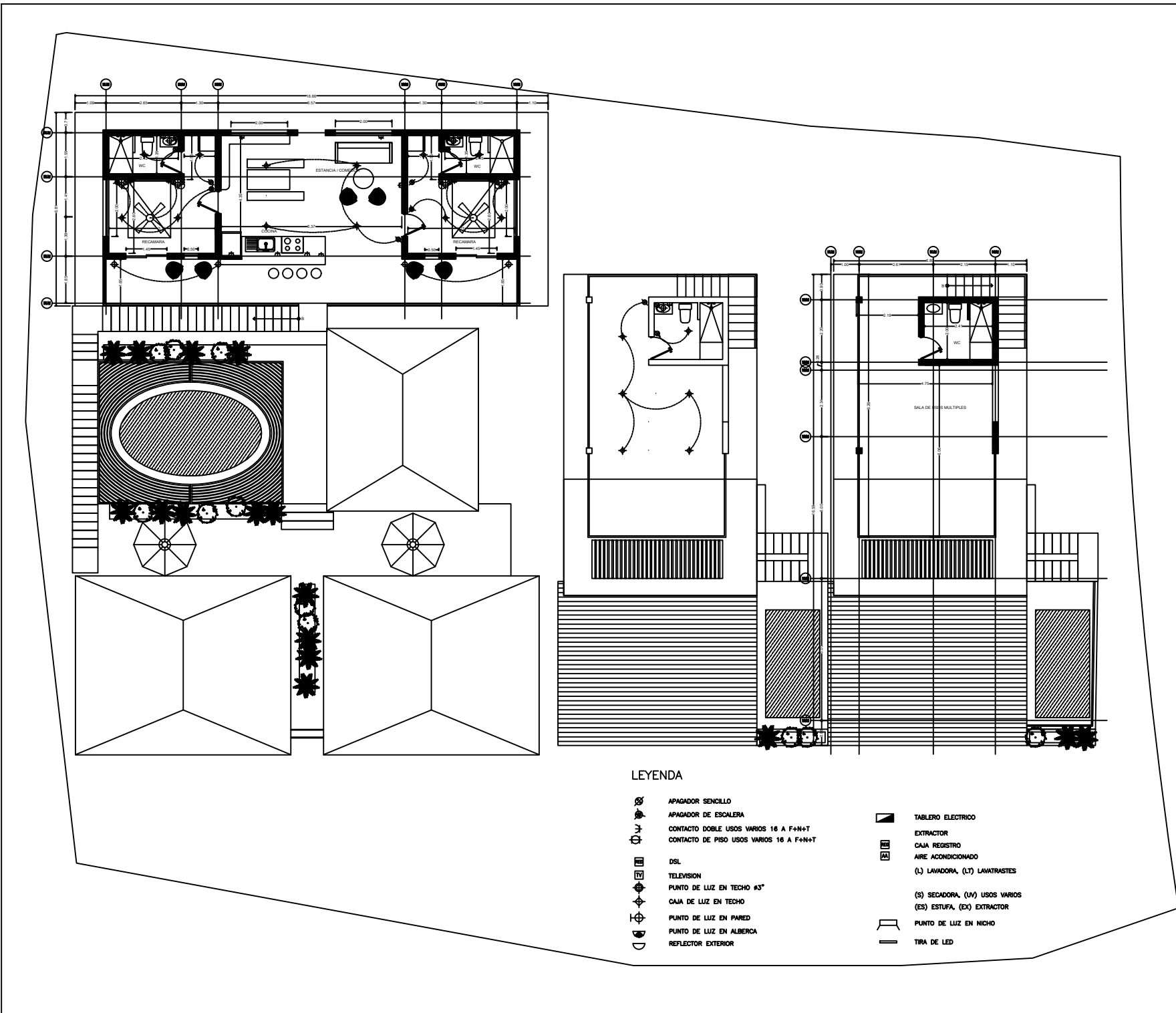
LEYENDA

- | | | | |
|---|---|---|--------------------------------|
|  | APAGADOR SENCILLO |  | TABLERO ELECTRICO |
|  | APAGADOR DE ESCALERA |  | EXTRACTOR |
|  | CONTACTO DOBLE USOS VARIOS 16 A F+N+T |  | CAJA REGISTRO |
|  | CONTACTO DE PISO USOS VARIOS 16 A F+N+T |  | AIRE ACCIONADO |
|  | DSL |  | (L) LAVADORA, (LT) LAVATRASTES |
|  | TELEVISION |  | (S) SECADORA, (UV) USOS VARIOS |
|  | PUNTO DE LUZ EN TECHO #3" |  | (ES) ESTUFA, (EX) EXTRACTOR |
|  | CAJA DE LUZ EN TECHO |  | PUNTO DE LUZ EN NICHO |
|  | PUNTO DE LUZ EN PARED |  | TIRA DE LED |
|  | PUNTO DE LUZ EN ALBERCA | | |
|  | REFLECTOR EXTERIOR | | |



LEYENDA

- | | | | |
|--|---|--|--------------------------------|
| | APAGADOR SENCILLO | | TABLERO ELECTRICO |
| | APAGADOR DE ESCALERA | | EXTRACTOR |
| | CONTACTO DOBLE USOS VARIOS 16 A F+N+T | | CAJA REGISTRO |
| | CONTACTO DE PISO USOS VARIOS 16 A F+N+T | | AIRE ACCIONADO |
| | DSL | | (L) LAVADORA, (LT) LAVATRASTES |
| | TELEVISION | | (S) SECADORA, (UV) USOS VARIOS |
| | PUNTO DE LUZ EN TECHO #3" | | (ES) ESTUFA, (EX) EXTRACTOR |
| | CAJA DE LUZ EN TECHO | | PUNTO DE LUZ EN NICHO |
| | PUNTO DE LUZ EN PARED | | TIRA DE LED |
| | PUNTO DE LUZ EN ALBERCA | | |
| | REFLECTOR EXTERIOR | | |



LEYENDA

- | | | | |
|--|---|--|--------------------------------|
| | APAGADOR SENCILLO | | TABLERO ELECTRICO |
| | APAGADOR DE ESCALERA | | EXTRACTOR |
| | CONTACTO DOBLE USOS VARIOS 16 A F+N+T | | CAJA REGISTRO |
| | CONTACTO DE PISO USOS VARIOS 16 A F+N+T | | AIRE ACCIONADO |
| | DSL | | (L) LAVADORA, (LT) LAVATRASTES |
| | TELEVISION | | (S) SECADORA, (UV) USOS VARIOS |
| | PUNTO DE LUZ EN TECHO #3" | | (ES) ESTUFA, (EX) EXTRACTOR |
| | CAJA DE LUZ EN TECHO | | PUNTO DE LUZ EN NICHO |
| | PUNTO DE LUZ EN PARED | | TIRA DE LED |
| | PUNTO DE LUZ EN ALBERCA | | |
| | REFLECTOR EXTERIOR | | |